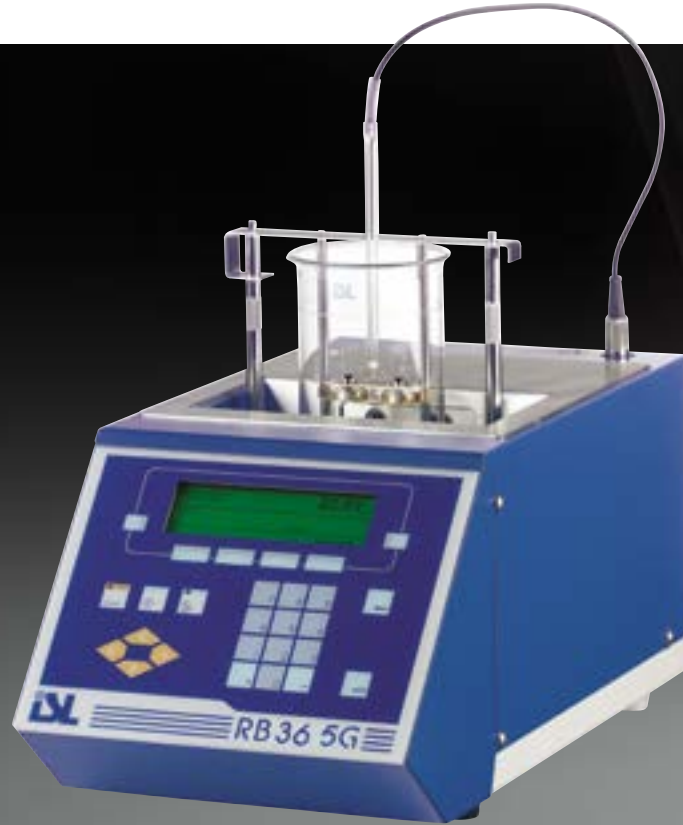


Automated Ring & Ball Tester

RB36 5G



RB36 5G

The cost-effective solution for precise and easy softening point determination

ISL's modern and easy to use Ring & Ball instrument automatically determines softening points of many different substances. The RB36 5G, designed for measuring product temperatures from 0°C to 220°C,

simplifies testing and increases productivity, repeatability and reproducibility. The instrument enables simultaneous testing of two samples with independent monitoring and results display of each. Simply load the sample and with a few keystrokes, the test is started. Bath temperature and ball movement are precisely

controlled according standard test methods. This instrument integrates the top of the art regulation system specially designed for difficult method heating rate regulations. Heating rate is displayed in real-time and automatically stored with the result.

ADVANTAGES

- Accurate determination of softening point
- Simple, easy to use and economical
- Versatile, products test program
- On-site Quality-Check tracking

APPLICATION RANGE

- Softening Point
 - Bitumen
 - Hot coatings
 - Resins
 - Pitch
 - Tar
 - Road marking materials

STANDARD METHODS

- In compliance with:
 - ASTM D36
 - ASTM E28
 - EN 1427
 - IP 58
 - ISO 4625
 - DIN 52011
 - EN 1238
 - Optional kit for EN 1871
 - Wilhelmi Test



SPECIFICATIONS

U.S.A.

PAC, LP | 8824 Fallbrook Drive | Houston, Texas 77064
T: +1 800.444.TEST | O: +1 281.940.1803 | F: +1 281.580.0719
sales.usa@pacpl.com | service.usa@pacpl.com

FRANCE

BP 70285 | Verson | 14653 CARPIQUET Cedex
T: +33 231 264 300 | F: +33 321 266 293
sales.france@pacpl.com | PACServiceFrance@pacpl.com

GERMANY

Badstrasse 3-5 | P.O.Box 1241 | D-97912 Lauda-Königshofen,
T: +49 9343 6400 | F: +49 9343 640 101
sales.germany@pacpl.com | service.germany@pacpl.com

SINGAPORE

61 Science Park Road | #03-09/10 The Galen
Singapore Science Park III | Singapore 117525
T: +65 6412 0890 | F: +65 6412 0899
sales.singapore@pacpl.com | service.singapore@pacpl.com

NETHERLANDS

P.O.Box 10.054 | 3004 AB Rotterdam
Innsbruckweg 35 | 3047 AG Rotterdam
T: +31 10 462 4811 | F: +31 10 462 6330
sales.netherlands@pacpl.com | service.netherlands@pacpl.com

RUSSIA

Shabolovka Street | 34, Bldg. 2 | 115419 Moscow
T: +7 495 617 10 86 | F: +7 495 913 97 65
sales.russia@pacpl.com | service.russia@pacpl.com

CHINA

Room 1003, Sunjoy Mansion | No. 6 RiTan Rd.
Chao Yang District | Beijing 100020
T: +86 10 650 72236 | F: +86 10 650 72454
sales.china@pacpl.com | service.china@pacpl.com

INDIA

1508 | Dev Corpora | Pokhran Road No.1
Eastern Express Highway | Thane (W) - 400 601
T: +91-22-6700 4848 | F: +91-22-4228 4950
sales.india@pacpl.com | service.india@pacpl.com

MIDDLE EAST

A1 Quds Street, A1 Tawar road | LIU#H13 Dubai Airport Freezone
Near Dubai Airport (terminal 2) | P.O.Box #54781 | Dubai, UAE
T: +971 04 2947 995 | F: +971 04 2395 465
sales.middleeast@pacpl.com | service.middleeast@pacpl.com

SOUTH KOREA

#621 World Vision Building | 24-2, Youido-dong
Seoul 150-010
T: +82 2785 3900 | F: +82 2785 3977
sales.southkorea@pacpl.com | service.southkorea@pacpl.com

THAILAND

26th Floor, M. Thai Tower | All Seasons Place
87 Wireless Road | Lumpini, Phatumwan | Bangkok 10330
T: +66 2627 9410 | F: +662627 9401
sales.thailand@pacpl.com | service.thailand@pacpl.com

PAC Authorized Representatives are also located in most countries worldwide. For more information visit www.pacpl.com

ISL by PAC

ISL is a global provider of scientific apparatus and instruments for testing petroleum and petrochemical products in the lab and online. More than 20 automatic analyzers bearing the ISL brand are recognized for increasing test precision, boosting laboratory efficiency and reducing costs.

Ordering Information	RB36 5G Ring & Ball Tester, Includes accessories for bitumen test (beaker, rings, balls, test holder, for ASTM D36, EN 1427 or equivalent method)
Standard Test Methods	ASTM D36, ASTM E28, EN 1427, IP 58, ISO 4625, DIN 52011, EN 1238, and Optional kit for EN 1871, Wilhelmi test
Product Programs	Locally stores up to 40 product configuration programs, including test parameters, standard test method, liquid bath, pre-heating mode and starting temperature
Operation	<p>Temperature Range Testing from 0°C to 220°C (32 – 428°F)</p> <p>Cooling Automatic cool down</p> <p>Heating Safe and powerful low voltage heating element protected with a ceramic plate.</p> <p>Heating Rate Heating rate stability : 5°K/min +/-0.5°K; heating can be shown on the screen during the test and stored with result.</p> <p>Ball Detection Infrared light barrier with adjustable response time from 0.1 to 0.9 seconds</p> <p>Bath Media Water, glycerin, glycol, silicon oil</p> <p>Stirring Magnetic bar</p>
Traceability	<p>Operators Memorizes up to 10 operator names</p> <p>Test Condition Check Message warning and audible alarms for incorrect test conditions</p> <p>Temperature Probe Built-in memory chip; automatic recognition of probe at plug-in, gathers ID, offset values and calibration history records; 5 calibration points memorised</p> <p>Test Parameters Main test parameters stored in the database with results, including heating rate records</p> <p>Alarm Tracking All messages are stored in the database with results</p>
Calibration & Diagnostics	Automatic calibration with programmable frequency; 5-point probe offset correction table memorized in the PT100 thermometer memory chip; automatic diagnostic on analyzer functions; upload/download service features via PC.
Documentation	Detailed test report, date & time stamped; on-screen real time display of temperature and time with heating rate table; 50 result report (including heating rate curves) stored in memory; output to printer; transmitted to a PC and/or LIMS via built-in serial link.
Requirements	<p>Electrical 100-240V/50-60Hz auto-switching; power: 750 W; CE compliant</p> <p>Ambient Conditions Operation: recommended 15 – 30°C (30 – 86°F) 80% relative humidity at 25°C (40°F) Storage: 0 to +40°C (0 to +104°F)</p> <p>Dimensions & Weight 25cm (9.85") W x 50cm (19.7") H x 45cm (17.7") D (with testing device in place); 17 kg (99.2 lbs)</p>
Options & Accessories	<p>EN 1871 "Wilhelmi test" A specific optional package for performing this test is available</p> <p>Printer Parallel DeskJet or Dot Matrix printer</p> <p>Handling and Test Assistance Some accessories to help the samples manipulation and accessories storage in the laboratory have been developed or are under development; please, ask to your local representative for further information</p>