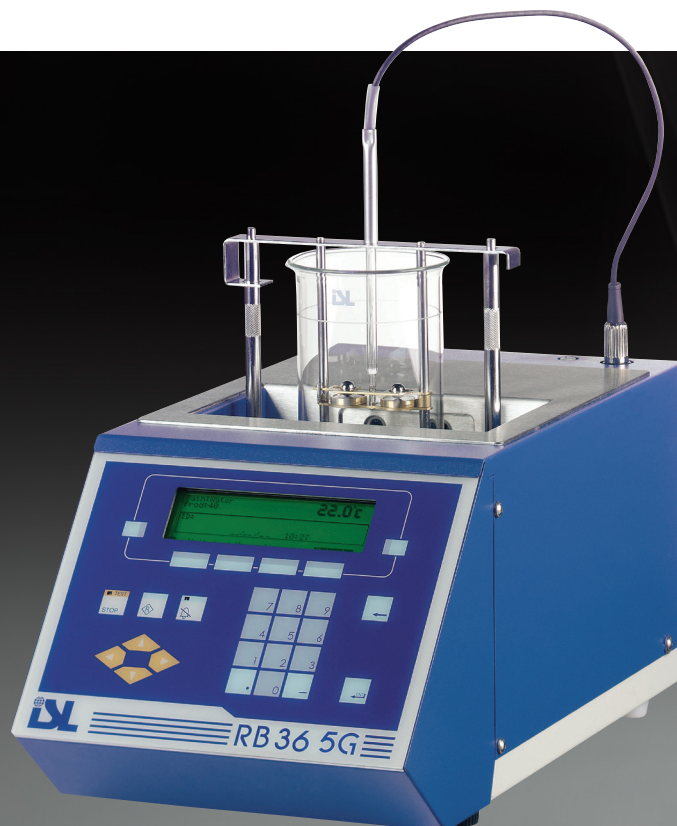




Automated Ring & Ball Tester

# RB36 5G

 **PAC**  
www.pacip.com



## RB36 5G

The cost-effective solution for precise and easy softening point determination

ISL's modern and easy to use Ring & Ball instrument automatically determines softening points of many different substances. The RB36 5G, designed for measuring product temperatures from 0°C to 220°C,

simplifies testing and increases productivity, repeatability and reproducibility. The instrument enables simultaneous testing of two samples with independent monitoring and results display of each. Simply load the sample and with a few keystrokes, the test is started. Bath temperature and ball movement are precisely

controlled according standard test methods.

This instrument integrates the top of the art regulation system specially designed for difficult method heating rate regulations. Heating rate is displayed in real-time and automatically stored with the result.

### ADVANTAGES

- Accurate determination of softening point
- Simple, easy to use and economical
- Versatile, products test program
- On-site Quality-Check tracking

### APPLICATION RANGE

- Softening Point
- Bitumen
  - Hot coatings
  - Resins
  - Pitch
  - Tar
  - Road marking materials

### STANDARD METHODS

- In compliance with:
- ASTM D36
  - ASTM E28
  - EN 1427
  - IP 58
  - ISO 4625
  - DIN 52011
  - EN 1238
  - Optional kit for EN 1871
  - Wilhelmi Test





solidpartners  
provensolutions

#### U.S.A.

PAC, LP | 8824 Fallbrook Drive | Houston, Texas 77064  
T: +1 800.444.TEST | O: +1 281.940.1803 | F: +1 281.580.0719  
sales.usa@pacpl.com | service.usa@pacpl.com

#### FRANCE

BP 70285 | Verson | 14653 CARPIQUET Cedex  
T: +33 231 264 300 | F: +33 321 266 293  
sales.france@pacpl.com | PACServiceFrance@pacpl.com

#### GERMANY

Badstrasse 3-5 | P.O.Box 1241 | D-97912 Lauda-Königshofen,  
T: +49 9343 6400 | F: +49 9343 640 101  
sales.germany@pacpl.com | service.germany@pacpl.com

#### SINGAPORE

61 Science Park Road | #03-09/10 The Galen  
Singapore Science Park III | Singapore 117525  
T: +65 6412 0890 | F: +65 6412 0899  
sales.singapore@pacpl.com | service.singapore@pacpl.com

#### NETHERLANDS

P.O.Box 10.054 | 3004 AB Rotterdam  
Innsbruckweg 35 | 3047 AG Rotterdam  
T: +31 10 462 4811 | F: +31 10 462 6330  
sales.netherlands@pacpl.com | service.netherlands@pacpl.com

#### RUSSIA

Shabolovka Street | 34, Bldg. 2 | 115419 Moscow  
T: +7 495 617 10 86 | F: +7 495 913 97 65  
sales.russia@pacpl.com | service.russia@pacpl.com

#### CHINA

Room 1003, Sunjoy Mansion | No. 6 RiTan Rd.  
Chao Yang District | Beijing 100020  
T: +86 10 650 72236 | F: +86 10 650 72454  
sales.china@pacpl.com | service.china@pacpl.com

#### INDIA

1508 | Dev Corpora | Pokhran Road No.1  
Eastern Express Highway | Thane (W) - 400 601  
T: +91-22-6700 4848 | F: +91-22-4228 4950  
sales.india@pacpl.com | service.india@pacpl.com

#### MIDDLE EAST

A1 Quds Street, A1 Tawar road | LIU#H13 Dubai Airport Freezone  
Near Dubai Airport (terminal 2) | P.O.Box #54781 | Dubai, UAE  
T: +971 04 2947 995 | F: +971 04 2395 465  
sales.middleeast@pacpl.com | service.middleeast@pacpl.com

#### SOUTH KOREA

#621 World Vision Building | 24-2, Youido-dong  
Seoul 150-010  
T: +82 2785 3900 | F: +82 2785 3977  
sales.southkorea@pacpl.com | service.southkorea@pacpl.com

#### THAILAND

26th Floor, M. Thai Tower | All Seasons Place  
87 Wireless Road | Lumpini, Phatumwan | Bangkok 10330  
T: +66 2627 9410 | F: +662627 9401  
sales.thailand@pacpl.com | service.thailand@pacpl.com

PAC Authorized Representatives are also located in most countries worldwide. For more information visit [www.pacpl.com](http://www.pacpl.com)

### ISL by PAC

ISL is a global provider of scientific apparatus and instruments for testing petroleum and petrochemical products in the lab and online. More than 20 automatic analyzers bearing the ISL brand are recognized for increasing test precision, boosting laboratory efficiency and reducing costs.

## SPECIFICATIONS

<b>Ordering Information</b>	RB36 5G Ring & Ball Tester, Includes accessories for bitumen test (beaker, rings, balls, test holder, for ASTM D36, EN 1427 or equivalent method)														
<b>Standard Test Methods</b>	ASTM D36, ASTM E28, EN 1427, IP 58, ISO 4625, DIN 52011, EN 1238, and Optional kit for EN 1871, Wilhelmi test														
<b>Product Programs</b>	Locally stores up to 40 product configuration programs, including test parameters, standard test method, liquid bath, pre-heating mode and starting temperature														
<b>Operation</b>	<table><tr><td>Temperature Range</td><td>Testing from 0°C to 220°C (32 – 428°F)</td></tr><tr><td>Cooling</td><td>Automatic cool down</td></tr><tr><td>Heating</td><td>Safe and powerful low voltage heating element protected with a ceramic plate.</td></tr><tr><td>Heating Rate</td><td>Heating rate stability : 5°K/min +/-0.5°K; heating can be shown on the screen during the test and stored with result.</td></tr><tr><td>Ball Detection</td><td>Infrared light barrier with adjustable response time from 0.1 to 0.9 seconds</td></tr><tr><td>Bath Media</td><td>Water, glycerin, glycol, silicon oil</td></tr><tr><td>Stirring</td><td>Magnetic bar</td></tr></table>	Temperature Range	Testing from 0°C to 220°C (32 – 428°F)	Cooling	Automatic cool down	Heating	Safe and powerful low voltage heating element protected with a ceramic plate.	Heating Rate	Heating rate stability : 5°K/min +/-0.5°K; heating can be shown on the screen during the test and stored with result.	Ball Detection	Infrared light barrier with adjustable response time from 0.1 to 0.9 seconds	Bath Media	Water, glycerin, glycol, silicon oil	Stirring	Magnetic bar
Temperature Range	Testing from 0°C to 220°C (32 – 428°F)														
Cooling	Automatic cool down														
Heating	Safe and powerful low voltage heating element protected with a ceramic plate.														
Heating Rate	Heating rate stability : 5°K/min +/-0.5°K; heating can be shown on the screen during the test and stored with result.														
Ball Detection	Infrared light barrier with adjustable response time from 0.1 to 0.9 seconds														
Bath Media	Water, glycerin, glycol, silicon oil														
Stirring	Magnetic bar														
<b>Traceability</b>	<table><tr><td>Operators</td><td>Memorizes up to 10 operator names</td></tr><tr><td>Test Condition Check</td><td>Message warning and audible alarms for incorrect test conditions</td></tr><tr><td>Temperature Probe</td><td>Built-in memory chip; automatic recognition of probe at plug-in, gathers ID, offset values and calibration history records; 5 calibration points memorised</td></tr><tr><td>Test Parameters</td><td>Main test parameters stored in the database with results, including heating rate records</td></tr><tr><td>Alarm Tracking</td><td>All messages are stored in the database with results</td></tr></table>	Operators	Memorizes up to 10 operator names	Test Condition Check	Message warning and audible alarms for incorrect test conditions	Temperature Probe	Built-in memory chip; automatic recognition of probe at plug-in, gathers ID, offset values and calibration history records; 5 calibration points memorised	Test Parameters	Main test parameters stored in the database with results, including heating rate records	Alarm Tracking	All messages are stored in the database with results				
Operators	Memorizes up to 10 operator names														
Test Condition Check	Message warning and audible alarms for incorrect test conditions														
Temperature Probe	Built-in memory chip; automatic recognition of probe at plug-in, gathers ID, offset values and calibration history records; 5 calibration points memorised														
Test Parameters	Main test parameters stored in the database with results, including heating rate records														
Alarm Tracking	All messages are stored in the database with results														
<b>Calibration &amp; Diagnostics</b>	Automatic calibration with programmable frequency; 5-point probe offset correction table memorized in the PT100 thermometer memory chip; automatic diagnostic on analyzer functions; upload/download service features via PC.														
<b>Documentation</b>	Detailed test report, date & time stamped; on-screen real time display of temperature and time with heating rate table; 50 result report (including heating rate curves) stored in memory; output to printer; transmitted to a PC and/or LIMS via built-in serial link.														
<b>Requirements</b>	<table><tr><td>Electrical</td><td>100-240V/50-60Hz auto-switching; power: 750 W; CE compliant</td></tr><tr><td>Ambient Conditions</td><td>Operation: recommended 15 – 30°C (30 – 86°F) 80% relative humidity at 25°C (40°F) Storage: 0 to +40°C (0 to +104°F)</td></tr><tr><td>Dimensions &amp; Weight</td><td>25cm (9.85") W x 50cm (19.7") H x 45cm (17.7") D (with testing device in place); 17 kg (99.2 lbs)</td></tr></table>	Electrical	100-240V/50-60Hz auto-switching; power: 750 W; CE compliant	Ambient Conditions	Operation: recommended 15 – 30°C (30 – 86°F) 80% relative humidity at 25°C (40°F) Storage: 0 to +40°C (0 to +104°F)	Dimensions & Weight	25cm (9.85") W x 50cm (19.7") H x 45cm (17.7") D (with testing device in place); 17 kg (99.2 lbs)								
Electrical	100-240V/50-60Hz auto-switching; power: 750 W; CE compliant														
Ambient Conditions	Operation: recommended 15 – 30°C (30 – 86°F) 80% relative humidity at 25°C (40°F) Storage: 0 to +40°C (0 to +104°F)														
Dimensions & Weight	25cm (9.85") W x 50cm (19.7") H x 45cm (17.7") D (with testing device in place); 17 kg (99.2 lbs)														
<b>Options &amp; Accessories</b>	<table><tr><td>EN 1871 "Wilhelmi test"</td><td>A specific optional package for performing this test is available</td></tr><tr><td>Printer</td><td>Parallel DeskJet or Dot Matrix printer</td></tr><tr><td>Handling and Test Assistance</td><td>Some accessories to help the samples manipulation and accessories storage in the laboratory have been developed or are under development; please, ask to your local representative for further information</td></tr></table>	EN 1871 "Wilhelmi test"	A specific optional package for performing this test is available	Printer	Parallel DeskJet or Dot Matrix printer	Handling and Test Assistance	Some accessories to help the samples manipulation and accessories storage in the laboratory have been developed or are under development; please, ask to your local representative for further information								
EN 1871 "Wilhelmi test"	A specific optional package for performing this test is available														
Printer	Parallel DeskJet or Dot Matrix printer														
Handling and Test Assistance	Some accessories to help the samples manipulation and accessories storage in the laboratory have been developed or are under development; please, ask to your local representative for further information														

Copyright 2015/1 PAC L.P. All rights reserved - 00.02.123

[www.pacpl.com](http://www.pacpl.com)

DL ac ALcor HERZOG PetroSpec PSPI ANTEK CambridgeViscosity  
USA • FRANCE • GERMANY • NETHERLANDS • UAE • RUSSIA • CHINA • SINGAPORE • SOUTH KOREA • THAILAND • INDIA